

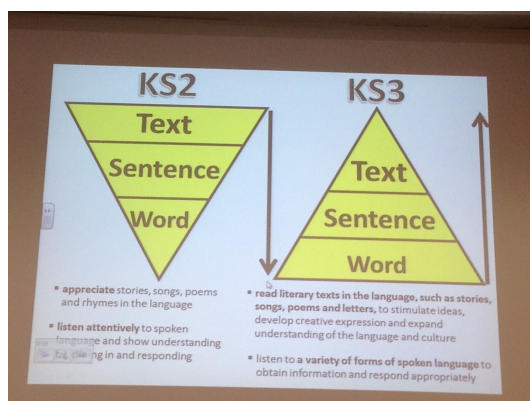
President's plenary
Rachel Hawkes

ALL together better: Joining up policy, practice professionals and phases

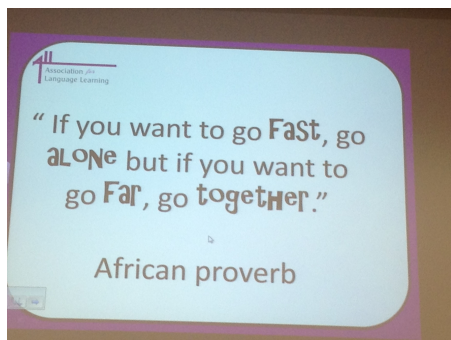
Loss of levels - how will we know if we're all making up our own levels?

How to apply for ITT - fragmented and complicated

Compulsory languages at KS2 - Language Trends survey positive for PLL; not joining up KS2 and 3 is not an option. Not judged on it until GCSE so secondaries need to think. And also need time to talk to primaries. Need joined up methodology



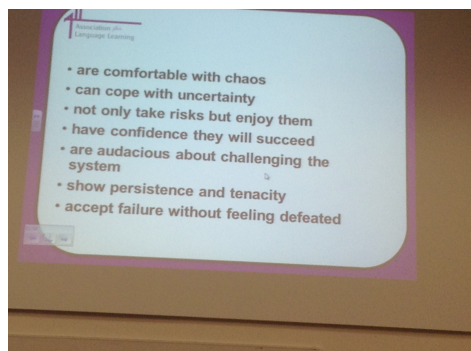
If we moves from looking at story in KS2 (text to sentence to word) to words into sentences into text in KS3, they'll be confused - need to move each way!



Current govt like going it alone and have lost sight of consultation and discussion; sometimes we rush in ahead.

Pausing for thought and joining up helps!

How do we respond?



In between times, ALL is a voice that speaks (not always listened to though) and lots going on in regions. Also primary hubs. Also online communities.

